

**Innovation in Protected Cultivation: Greenhouse, Polyhouse & Shade Net house**

[www.agrodome.in](http://www.agrodome.in)

[info@agrodome.in](mailto:info@agrodome.in)

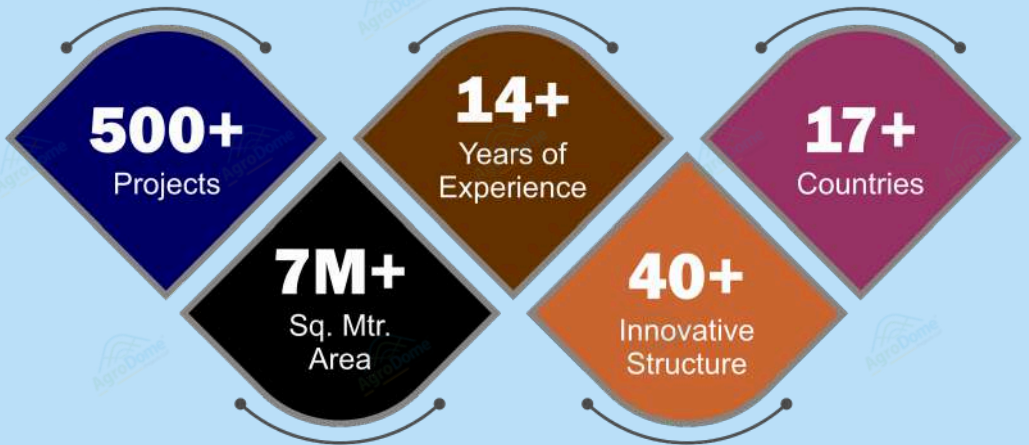


# About AgroDome Projects LLP

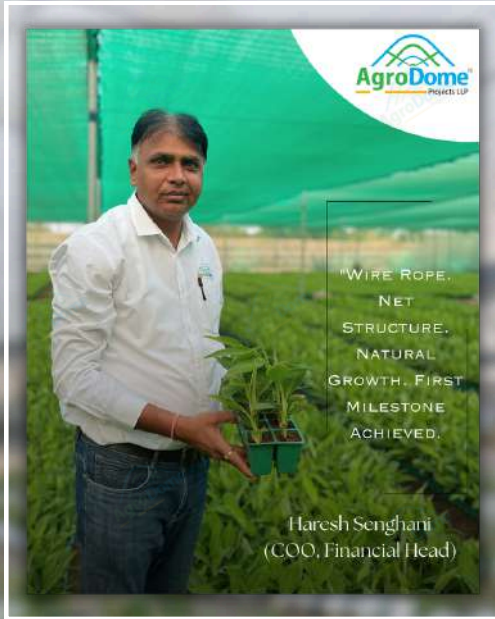
- Agrodome Projects LLP brings over a decade of expertise to modern agriculture, offering advanced greenhouse and polyhouse solutions designed for sustainable protected cultivation. Since launching in 2024, our company has helped farmers and agribusinesses overcome climate challenges and boost crop yields through turnkey structures, including polyhouses, shade-net houses, tunnels, dome-roof greenhouses, and rainproof protection.
- With a commitment to customer-centric service and innovation, Agrodome delivers tailored solutions from concept and construction to post-installation support. Our skilled team combines agronomic knowledge and cutting-edge technology to serve both small farms and large agricultural corporations, ensuring projects are efficient, resilient, and responsive to local needs.
- Driven by values of sustainability and productivity, Agrodome Projects LLP is dedicated to empowering worldwide agricultural sector for the future. We strive to build a greener, more profitable farming landscape by enabling clients to adapt, grow, and succeed through reliable greenhouse infrastructure and expert guidance.



# Our Global Presence



# AgroDome's Founder:



“From Strong Roots to Top Heights in  
Just Two Years.”

# Our Vision

- To become India's most trusted and globally recognized company for greenhouse farming solutions, leading the transition toward smart, efficient, and climate-resilient Agriculture. We envision a farming ecosystem where every grower—small or large—has access to technology that supports year-round cultivation, higher profitability, and healthier produce.



# Our Mission

- To empower farmers with innovative, durable and affordable protected cultivation systems that enhance crop yield, reduce farming risks, and ensure sustainable agricultural growth.
- We aim to transform Indian agriculture by providing modern greenhouse solutions backed by agronomy support, technical guidance and reliable customer service.





# Our Core Values

## 01. Customer Focus

- Understanding each farmer's unique needs, we deliver customized greenhouse solutions that help grow higher-quality crops and improve productivity.

## 03. Decades of Experience

- With over a decade of experience in the greenhouse industry since 2010, we have successfully handled multiple projects with proven knowledge and skills. Experience-driven execution is our key strength.

## 02. Commitment

- We handle every stage of your project with care, delivering seamless execution and reliable results.

## 04. High Performance

- High-performance solutions designed to improve yield, efficiency, and reliability in every project.





# Why to chose AgroDome?

## 01. Innovative Design

---

- We develop innovative, climate-responsive greenhouse designs based on crop requirements.

## 03. Strong & Durable Structures

---

- Designed with top-grade materials, our greenhouse systems offer unmatched strength, durability, and long-term performance.

## 05. Time-Driven Project Planning

---

- Our team ensures well-structured planning and effective time management at every stage for efficient project delivery.

## 02. Expert Supervision

---

- Backed by years of experience, our supervision team ensures every structure is executed with accuracy, strength, and technical expertise.

## 04. Integrated Turnkey Services

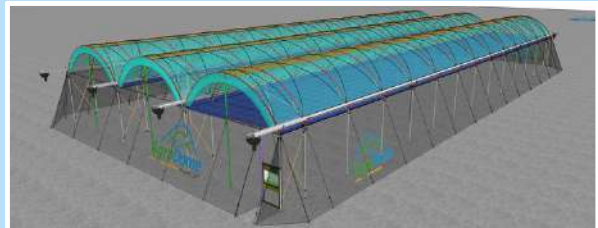
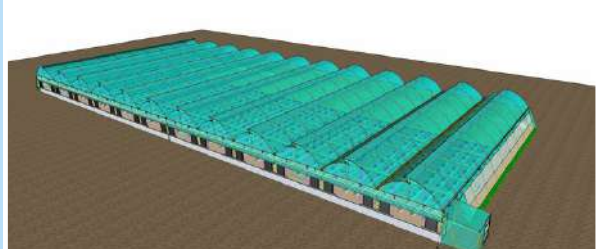
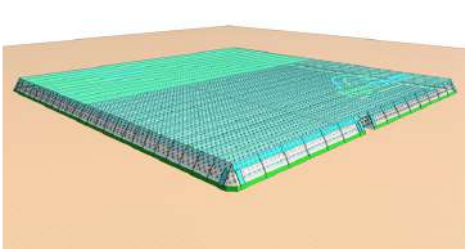
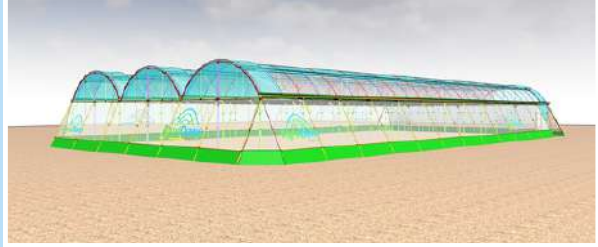
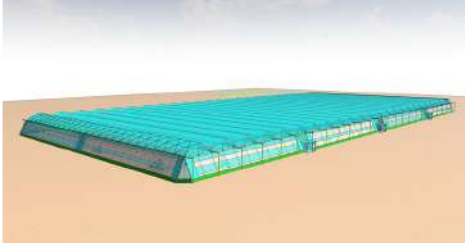
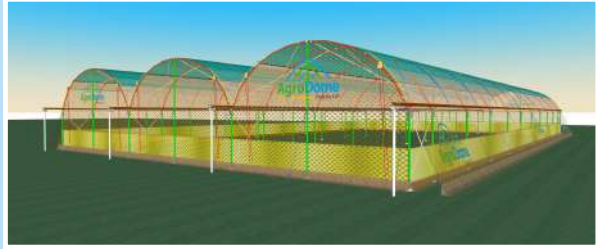
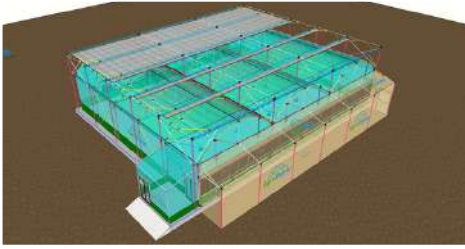
---

- We provide complete turnkey solutions, managing every stage from design to execution for hassle-free project delivery.





# OUR CREATIVE INNOVATION





# OUR PRODUCT



**MULTI SPAN HIGH TUNNEL DE -1**



**NATURALLY VENTILATED POLYHOUSE**



**MULTI SPAN HIGH TUNNEL DE -2**



**DOME ROOF NET HOUSE**



**SINGLE SPAN TUNNEL**



**WIRE ROPE NET HOUSE**





# OUR PRODUCT



**SINGLE SPAN NVPH**



**DOME ROOF POLY HOUSE DE 1**



**FAN PAD GREEN HOUSE**



**SOLAR DRYER**



**WIRE ROPE POLY HOUSE**



**APPLE ORCHARD STRUCTURE**





# OUR PRODUCT



**DRAGON FRUIT ORCHARD STRUCTRE**



**FLAT ROOF NET HOSUE**



**SINGLE SPAN FAN PAD GREEN HOUSE**



**POLYCARBONATE STRUCTURE**



**CHERRY ORCHARD STRUCTURE**



**PEARS ORCHARD STRUCTURE**





# OUR PRODUCT



**POMEGRANATE ORCHARD STRUCTURE**



**GRTAPES ORCHARD STRUCTURE**



**SLUDGE DRYER**



**DOME ROOF POLY HOUSE HYBRID STRUCTURE**



**NVPH HEVY STRUCTURE**



**MULTI SPAN HIGH TUNNEL HYBRID**



# Our Corporate Clients

## DHANUKA FARM



We deliver specialized high tunnel (Spanish tunnel) systems designed to optimize blueberry, raspberry, and strawberry cultivation.

## PATANJALI



An Indian FMCG company that produces natural, Ayurvedic, and herbal products, we provide innovative top rolling tunnels for berries crop

## S BERRIES



We provide specialized nursery structures for companies producing berry plants through tissue culture.

## WEST FALIYA FRUIT



Our customized structures support efficient and high-quality avocado nursery production.

## RELIANCE



Tonnz Berry Company is engaged in cultivating various berry types, supported by our multispan tunnel systems

## CAL PACIFIC



Cal Pacific Agri Solutions provides complete turnkey solutions for commercial berry farming with AgroDome Structure

# Our Corporate Clients

Swami Agri



Swami Agri is an agricultural company based in Senegal. We provide wire rope cable perline structures for banana orchards in the Sahara Desert.

RELIANCE



**SENEGINDIA SA**  
CONSTRUIRE LE FUTUR ENSEMBLE

“Senegindia S.A, established in 2008, is a Senegalese company specializing in real estate and big potato cultivation farmer, here we provide Fan Pad structures for potato seeds cultivation

CAL PACIFIC

**sagoma**  
EST. 1995

“Sagoma Impex Pvt Ltd, established in 2004, is a trusted exporter and large scale dragon fruit farmer and here we provide shading and tressling solution for dragon fruit orchard

Farm 2 FAM



“Farm2Fam is large scale farm for berries cultivation we provide multi span tunnels to protect rain and hail .

PRANJ & RELIANCE

**Reliance**  
Industries Limited

**praj**  
Innovate • Integrate • Deliver

Reliance Industries is a leading Indian company have a project of bioenergy, here we provide raw material storage solution.

GURUKRUPA TISSUE CULTURE

**GURUKRIPA**  
TISSUE CULTURE

“The aim of Gurukripa Tissue Culture is to provide scientifically developed, high-performing, virus-free, and genuine plants to farmers across India. we provide Fan Pad structures for nursery purpose .

# Our Corporate Clients

## METROGEN BIOTECH



"Metrogen Biotech, a DBT-certified lab in Gujarat, produces high-quality, disease-free banana tissue culture plants here we provide low cost cable perline structure for banana hardening

## Eeki



"Eeki Foods is cultivating large scale vegetable farming in greenhouse - polyhouse - Fan Pad house here we provide Fam Pad structures at Kota , Rajasthan

## ARVIND MILL



"Arvind Mills is a premier Indian textile company, delivering high-quality fabrics and innovative, sustainable solutions to global markets." we provide Fan Pad for high value vegetable crop.

## ABJ HYDROPHONIC



The ABAJ hydroponic is new startup focused on high-value vegetables, herbs, and berry crops, along with cost-effective harvesting and value-addition facilities. We provide innovative top-rolling dome roof polyhouse structures.

## IG DECCAN



The company has a high-tech nursery for avocado plants, where we provide PEQ facilities for nursery structures.

## THYLAKOID BIOTECH



"Thylakoid Biotech Pvt. Ltd. produces and exports premium-quality herbs , here we provide solar dryer for moringa leaf drying

# Our Corporate Clients

Sam Agri



Sam Agri Group is a leading Indian exporter of fresh and processed horticultural products, berries cultivation with integrated farms, nurseries, here we provide multispan tunnels with chimney plastic tunnels

Singori biotech

Singori NR Biotech CO

Singori Biotech provides complete turnkey solutions for commercial berry farming with AgroDome Structure

NIVARA FARM



Nivara farm grow blueberry and raspberry projects. here we Designed multi span tunnels with advanced film to reduces humidity and temperature, eliminates hot pocket



**“Partner with us for smart, scalable greenhouse solutions that grow your business and your sustainability goals.”**

# Our Exclusive Suppliers



# Customer Testimonials



## Dhanuka Farm

We highly satisfied with AgroDome material quality and structure finishing work for tunnel project.

## Omprakash (RJ)



हमने पिछले सीज़न में एनवीपीएच पॉलीहाउस लगाया था और इसके नतीजे बहुत अच्छे हैं। तापमान संतुलित रहता है, पौधे स्वस्थ रूप से बढ़ते हैं और रखरखाव आसान है। इससे हमारी फसल की गुणवत्ता में वाकई सुधार हुआ है।



## Ratan Singh (RJ)

This naturally ventilated polyhouse works perfectly for our farm. Airflow is good, water usage is less, and crops look fresh throughout the year. We are fully satisfied.

# Customer Testimonials



**Santosh Kanwar (RJ)**

एनवीपीएच पॉलीहाउस ने प्राकृतिक वेंटिलेशन बनाए रखते हुए फसलों को खराब मौसम से बचाने में हमारी मदद की। स्थापना सुचारू रूप से हुई और संरचना मजबूत है।



**Mahipat Singh Jadeja (Guj)**

The commitment to customer satisfaction at AgroDome is unmatched. From the initial inquiry to post-purchase support, their team has been helpful. Great experience!



**Metrogen Biotech (Guj)**

Had a great experience with AGRODOME .The WRNH system truly supports healthy plant growth and delivers consistent performance. Highly satisfied with the results for banana seedling plants

# Customer Testimonials



**Sukhvir Singh (RJ)**

We chose NVPH because it is simple and cost-effective. The natural ventilation keeps plants stress-free and growth is consistent. It is a great solution



**Balu Ram (RJ)**

I am from Sikar, (Raj.) Last year I decided to invest in a naturally ventilated polyhouse and it helps in protecting them from the harsh sun, strong winds, and dus it gave me good returns



**IG Deccan (Telangana)**

AgroDome delivered a high-quality PEQ Facility with excellent ventilation and strong structure. Very satisfied with the results.

# Contact Information



+91-9898173376, +91-9825332949



[www.agrodome.in](http://www.agrodome.in)



[info@agrodome.in](mailto:info@agrodome.in)



417, Suyash Solitaire, Near Podar  
International School, Kudasán,  
Gandhinagar - 382421



*Assured Success*

**Innovation**  
**Quality**  
**Expertise**